



**PHASING PLAN**

**PHASE 1: BUDGET - \$75,000**

In order to activate the site, the first feature recommended to be built will be the bridge plaza. The bridge plaza will also include an access point to the open green and trails area of the park space.

**PHASE 2: BUDGET - \$75,000**

To further activate the site, Phase 2 will consist of trails and open, passive green space. The trails in this area could be constructed with volunteer effort if necessary. Seating and other site amenities will be located in this area to allow city residents to take in views of the Wheeling Suspension Bridge and downtown Wheeling.

**PHASE 3: BUDGET - \$200,000**

Phase 3 consists of the riverbank stabilization, river access, and boat dock/kayak launch. In addition, this phase includes a temporary boat launch for special permit use. By completing this stage, the park will be able to be utilized as a launching point (for kayakers) or as a stop along a water trail for kayakers and boaters.

**PHASE 4: BUDGET - \$250,000**

The renovation of South Front Street is recommended to take place as the fourth phase of the project. The completion of this phase will create several parking spaces for visitors, as well as an improved streetscape and landscaping. The improved streetscape could easily be closed off for pedestrians-only during special events. It is recommended that the city chase TA (Transportation Alternative) funds to pay for this phase of the project.

**PHASE 5: BUDGET - \$550,000**

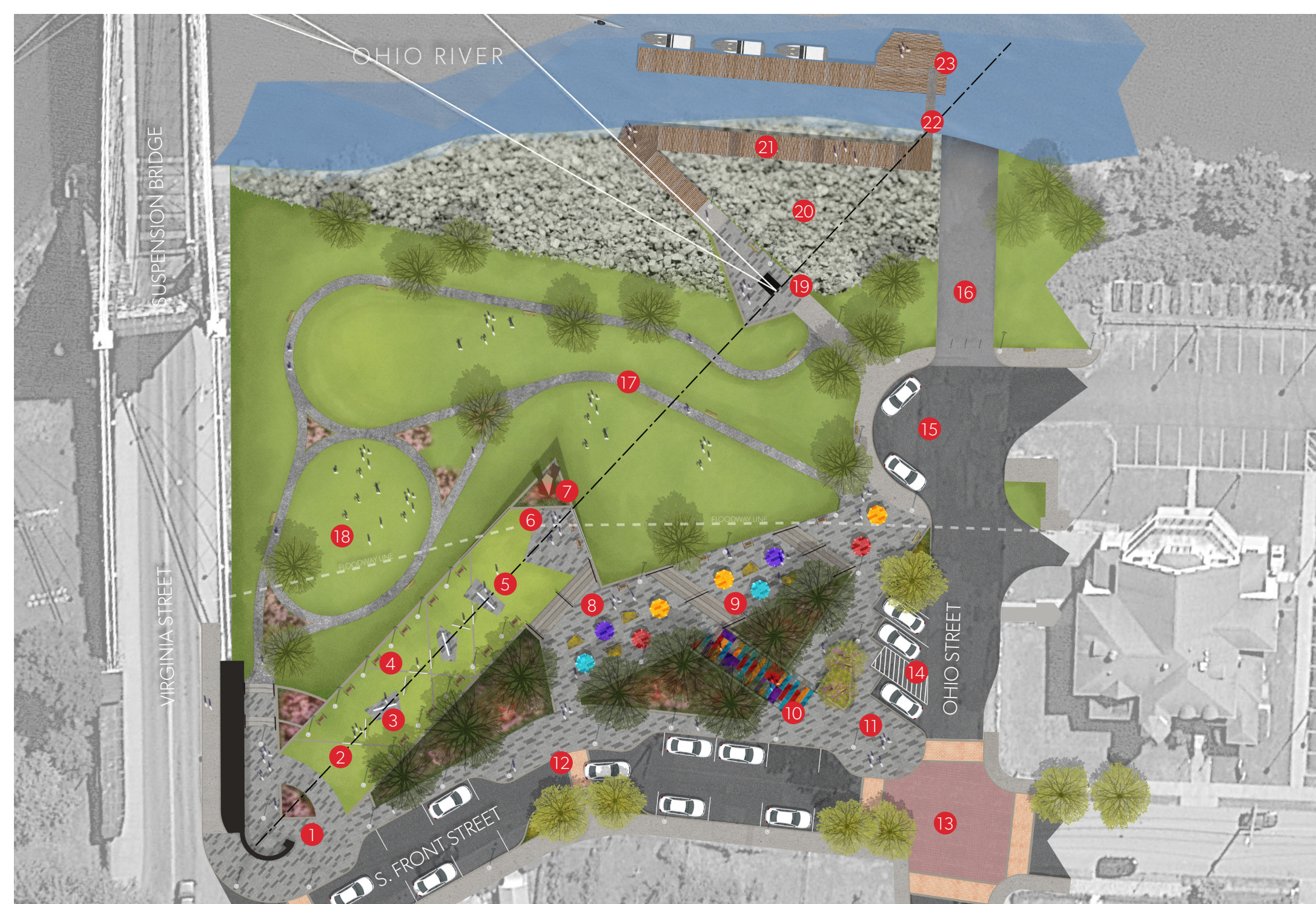
The proposed Phase 5 of the project includes the development of the large plaza and landscape space at the corner of South Front Street and Ohio Street. The large plaza space includes a colorful shade structure, trees, landscaping, and ample benches and swinging benches. This area of the park could serve as a community gathering space.

**PHASE 6: BUDGET - \$750,000**

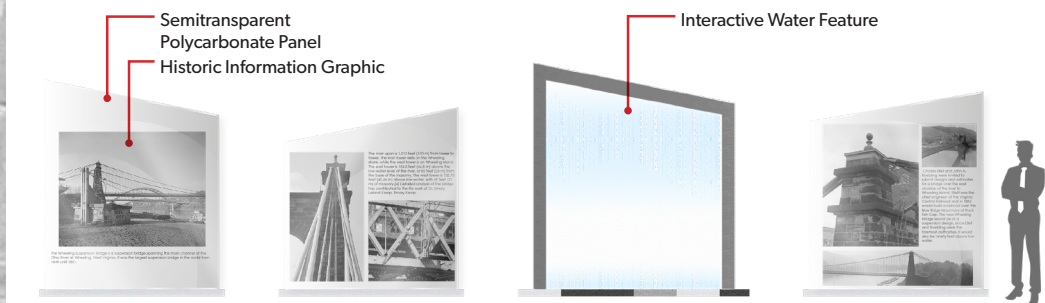
The final phase of the site development is the development of the green, history walk, interactive water elements, and scenic overlook. Though this potentially will be the most costly phase to develop, it will have the greatest impact on the site. The history walk will allow residents and visitors alike to learn about the key role the Wheeling Suspension Bridge (and other transportation elements) have played in the development of the City. The green, which is adorned on either side by swings and benches, will terminate in an overlook which gives dramatic views of both the downtown and the Suspension Bridge. At the overlook, a sculptural element is to be developed as a focal point in the park. Overall, this phase of the park will serve the City as a popular destination for years to come.



**WHEELING GATEWAY PARK MASTER PLAN**



History Walk and Green



History Walk Panels and Interactive Water Feature



Shade Structure and Terrace Plaza



Overlook Plaza

- |                      |                            |                        |                            |
|----------------------|----------------------------|------------------------|----------------------------|
| 1 Bridge Plaza       | 7 Focal Point (Public Art) | 13 Paver Intersection  | 19 Lower Plaza             |
| 2 History Walk       | 8 Plaza +Activity Zone     | 14 ADA Parking         | 20 Riverbank Stabilization |
| 3 Water Play Feature | 9 Terrace Plaza #1         | 15 Turnaround          | 21 Boardwalk (ADA Access)  |
| 4 Swinging Benches   | 10 Terrace Plaza #2        | 16 Boat + Kayak Launch | 22 Gangway                 |
| 5 Grand Lawn (Mall)  | 11 Secondary Entry Plaza   | 17 Walking Trails      | 23 Boat + Kayak Dock       |
| 6 Overlook Plaza     | 12 Crosswalk + Streetscape | 18 Open Green          |                            |